

2535  
878

MODEL:428

GMB

△ 7239  
572

Much as the computing industry progressed from a mainframe to a PC to a mobile stage, with each stage marking bigger improvements in computing power while shrinking in size, the robots could be headed for the same trajectory. What this means is that soon when each of us could have teams of personal robots that follow us around in our daily lives, doing everything from cleaning our toilets to cleaning our arteries, and communicating with each other as part of swarm intelligence.

future robots should look like us and think like us. Certainly, the story of the humanoid robot is a story that is easy to tell, it feeds into our notions that we are increasingly headed to a world where man and machine co-exist, where robots play a dominant active role in all of our lives. Consider some of the stories that have appeared in just the past week:

the robot stand-up comedian, the robot postman in South Korea, and even robot sex workers. All of these stories seem to suggest that it is just a matter of time before robots can act to humans in intelligence,

BUNNlink is a remote machine management platform built from the ground up by BUNN with the following goals in mind:

- Provide a secure mechanism to remotely communicate and collect data on machines
- Enable data backed decisions for businesses
- Customize and deploy digital products and solutions

## CUSTOMER ALERTS REPORTING

Access information wherever and whenever via web-based portal support.



## FLEET SUPPORT

Manage a fleet of equipment easily with BUNNlink. Clone or customize machine operations, settings, and software via cloud based connection.



## CUSTOMIZATION

Deploy digital media to equipment remotely.



## VirtualTOUCH™

Conveniently select and dispense a beverage without touching a machine.

\*Available on select models



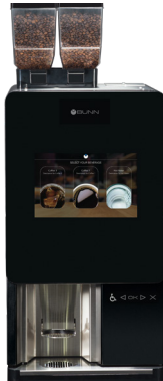
BUNNlink compatible equipment



Sure Tamp®



Fast Cup®



Sure Immersion® 220



Sure Immersion® 312



Infusion Series®  
Platinum Edition®

**Connect  
BUNNlink via  
Cellular or Wi-fi**

For additional information on these products go to [www.bunn.com](http://www.bunn.com)



# DATA BACKED REPORTING

## The Power to Enable Data-Backed Business Decisions

*The reports listed below are standard with BUNNLINK.*

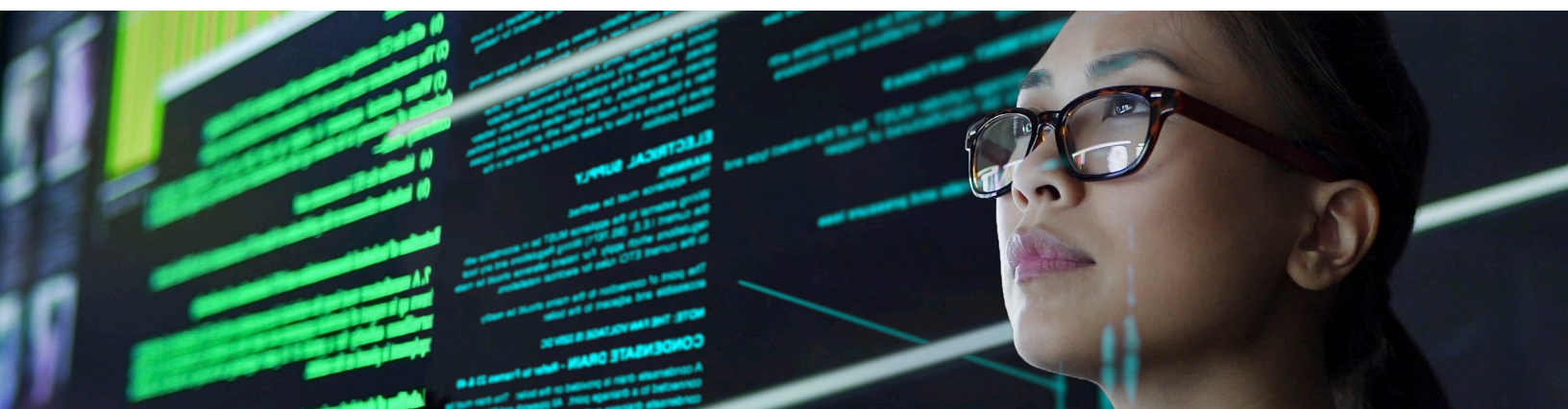
**Machine Statistics** – An overview of the equipment's performance showing cup counts, grinder usage, and any care alerts by each machine during the previous week or month.

**Customer Care Alerts and Notifications** – Identifies daily occurrences such as cleaning reminders, product refills and other events that trigger an alert.

**Day Part and Day Part by Day** – Day Part reflects the daily average cup count by size, recipe, and 4-hour increments during a prescribed date range. Day Part by Day is the same report but grouped by days of the week over a range of dates.

**Active Notices** - Reports any errors and the daily events for each machine.

**Product Usage and Production** – Product Usage identifies the weight of beans processed per hopper. Production shows recipes dispensed by drink type and cup count.



## FLEET SUPPORT

Manage a fleet easily by cloning equipment.  
Schedule or customize equipment operation time.

### Key Features

- Web based portal support to access information wherever and whenever.
- Easily group machines using the tagging capability.
- Customize information access for various levels of the organization.
- Easily update software and push media.

## CUSTOMIZATION

Remotely customize and deploy digital media to equipment. Update images, brand background and media.





**BUNNlink**<sup>®</sup>  
*tech connected.*

a remote machine  
management platform

BUNNlink provides a secure  
mechanism to remotely communicate  
and collect data on equipment.

Contact your BUNN representative for additional information about BUNNlink.

5020 Ash Grove Drive, Springfield, IL 62711 USA  
(800) 637-8606 | +1 (217) 529-6601 | [www.BUNN.com](http://www.BUNN.com)



8/21 © 2021 Bunn-O-Matic® Corporation