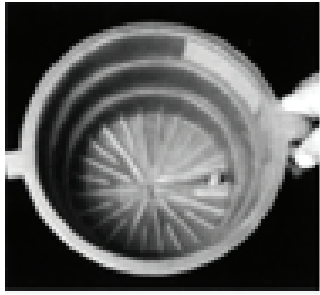
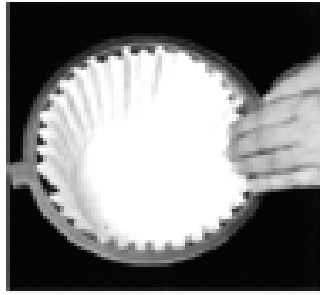


Brewing and Daily Cleaning Directions

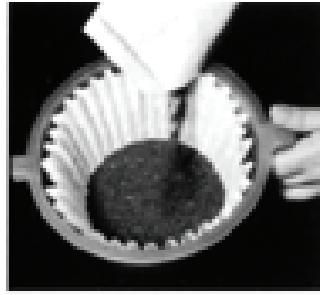
MODEL T ICED TEA BREWING



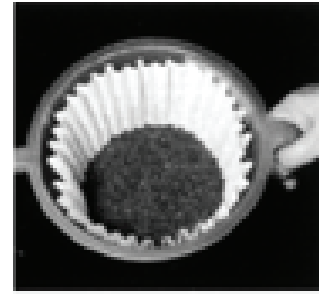
- Begin each brew cycle with a clean empty brew funnel.



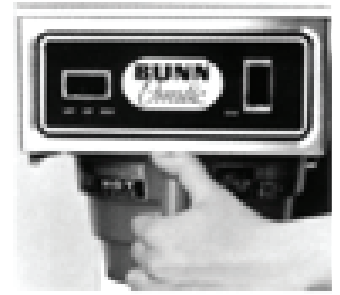
- Insert a BUNN® Tea filter into the funnel.



- Pour the packet of loose fresh tea into the filter.



- Level the bed of tea leaves by gently shaking the brew funnel.



- Slide the loaded brew funnel into the funnel rails until it stops.
- Locate the funnel tip directly over the hole in the desired reservoir cover.



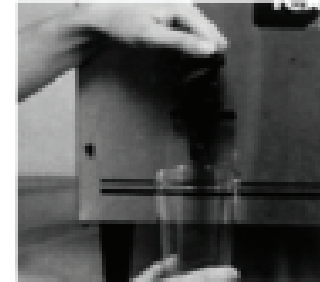
- Place the power switch in the ON position (Model T3) or select the desired reservoir RIGHT or LEFT (Model T6).



- Momentarily press the start switch.



- When tea no longer drips from the funnel tip, carefully remove the brew funnel and discard the used filter.
- Return the switch to the OFF position to prevent a false start.



- Fresh tea is available at the faucet.
- The small red light will glow when the beverage drops below the 1/2-gallon level.
- Drain the reservoir before starting a new brew cycle.

CLEAN AND SANITIZE YOUR ICED TEA BREWER DAILY



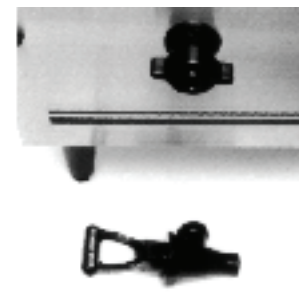
- Remove the brew funnel and thoroughly clean.
- The funnel tip and screen must be free from any tea particles or residue.
- Reassemble the funnel.



- Place the ON/OFF or selector switch in the OFF position.
- Remove and thoroughly rinse the sprayhead.
- The holes must be open and clear of any mineral deposits.
- Wipe the sprayhead panel clean with a damp cloth.



- Insert the delimiting spring into the sprayhead fitting until no more than one inch is visible and move it in and out 5 or 6 times.
- Insert the spring into the airvent hole in the sprayhead panel and move it in and out 5 or 6 times.
- Reattach the sprayhead.



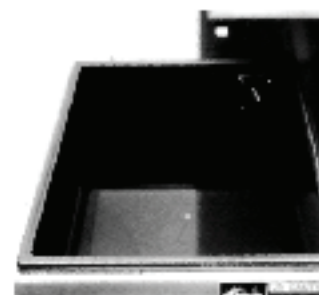
- Twist the faucet shank nut in a clockwise direction and remove the faucet from the brewer.



- Thoroughly clean the entire inside surface of the reservoir, the surface behind the reservoir rim, and the faucet shank with a brush using a mild detergent and water solution.
- Rinse the reservoir and shank with warm water.



- Disassemble the faucet.
- The faucet cleaning procedure requires a 3-compartment sink.
- Thoroughly wash all faucet parts in a mild detergent and water solution in the first sink.
- Rinse the parts in hot water in the second sink.
- Sanitize the parts for one minute in 75° warm chlorine solution (at least 50 ppm) in the third sink.
- Reassemble the faucet and attach it to the brewer.



- Sanitize all exposed surfaces of the reservoir with a 75° warm chlorine solution (at least 100 ppm).
- Empty the reservoir, insert the brew funnel and thoroughly rinse everything by running two complete brew cycles, emptying the reservoir after each.

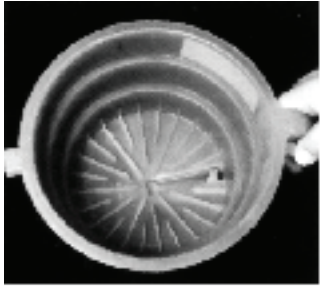


- Wash the entire outside surface of the brewer with a clean damp cloth.

DO NOT KEEP BREWED ICED TEA OVERNIGHT

Brewing and Daily Cleaning Directions

MODEL TL ICED TEA BREWING



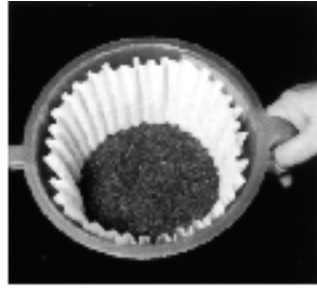
- Begin each brew cycle with a clean empty brew funnel.



- Insert a BUNN® Tea filter into the funnel.



- Pour the packet of loose fresh tea into the filter.



- Level the bed of tea leaves by gently shaking the brew funnel.



- Slide the loaded brew funnel into the funnel rails until it stops.
- Locate the funnel tip directly over the hole in the desired reservoir cover.



- Place the power switch in the ON position (Model TL3) or select the desired reservoir RIGHT or LEFT (Model TL6).



- Momentarily press the start switch.



- When tea no longer drips from the funnel tip, carefully remove the brew funnel and discard the used filter.
- Return the switch to the OFF position to prevent a false start.



- Fresh tea is available at the faucet.
- The small red light will glow when the beverage drops below the 1/2-gallon level.
- Drain the reservoir before starting a new brew cycle.

CLEAN AND SANITIZE YOUR ICED TEA BREWER DAILY



- Remove the brew funnel and thoroughly clean.
- The funnel tip and screen must be free from any tea particles or residue.
- Reassemble the funnel.



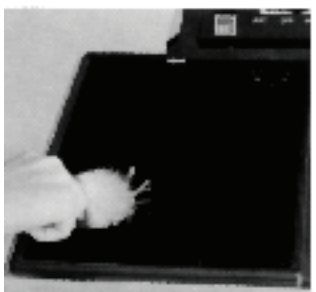
- Place the ON/OFF or selector switch in the OFF position.
- Remove and thoroughly rinse the sprayhead.
- The holes must be open and clear of any mineral deposits.
- Wipe the sprayhead panel clean with a damp cloth.



- Insert the deliming spring into the sprayhead fitting until no more than one inch is visible and move it in and out 5 or 6 times.
- Reattach the sprayhead.



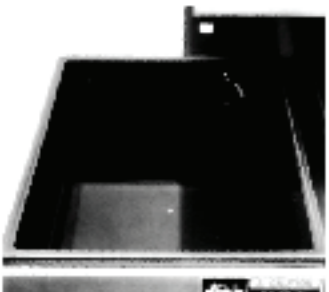
- Twist the faucet handle nut in a counterclockwise direction and remove the assembly from the faucet.
- Remove the faucet clean-out cap.



- Thoroughly clean the entire inside surface of the reservoir, the surface behind the reservoir rim, and the faucet shank with a brush using a mild detergent and water solution.
- Rinse the reservoir and shank with warm water.



- Disassemble the faucet.
- The faucet cleaning procedure requires a 3-compartment sink.
- Thoroughly wash all faucet parts in a mild detergent and water solution in the first sink.
- Rinse the parts in hot water in the second sink.
- Sanitize the parts for one minute in 75° warm chlorine solution (at least 50 ppm) in the third sink.
- Reassemble and attach the faucet and clean-out cap to the brewer.



- Sanitize all exposed surfaces of the reservoir with a 75° warm chlorine solution (at least 100 ppm).
- Empty the reservoir, insert the brew funnel and thoroughly rinse everything by running two complete brew cycles, emptying the reservoir after each.



- Wash the entire outside surface of the brewer with a clean damp cloth.

DO NOT KEEP BREWED ICED TEA OVERNIGHT